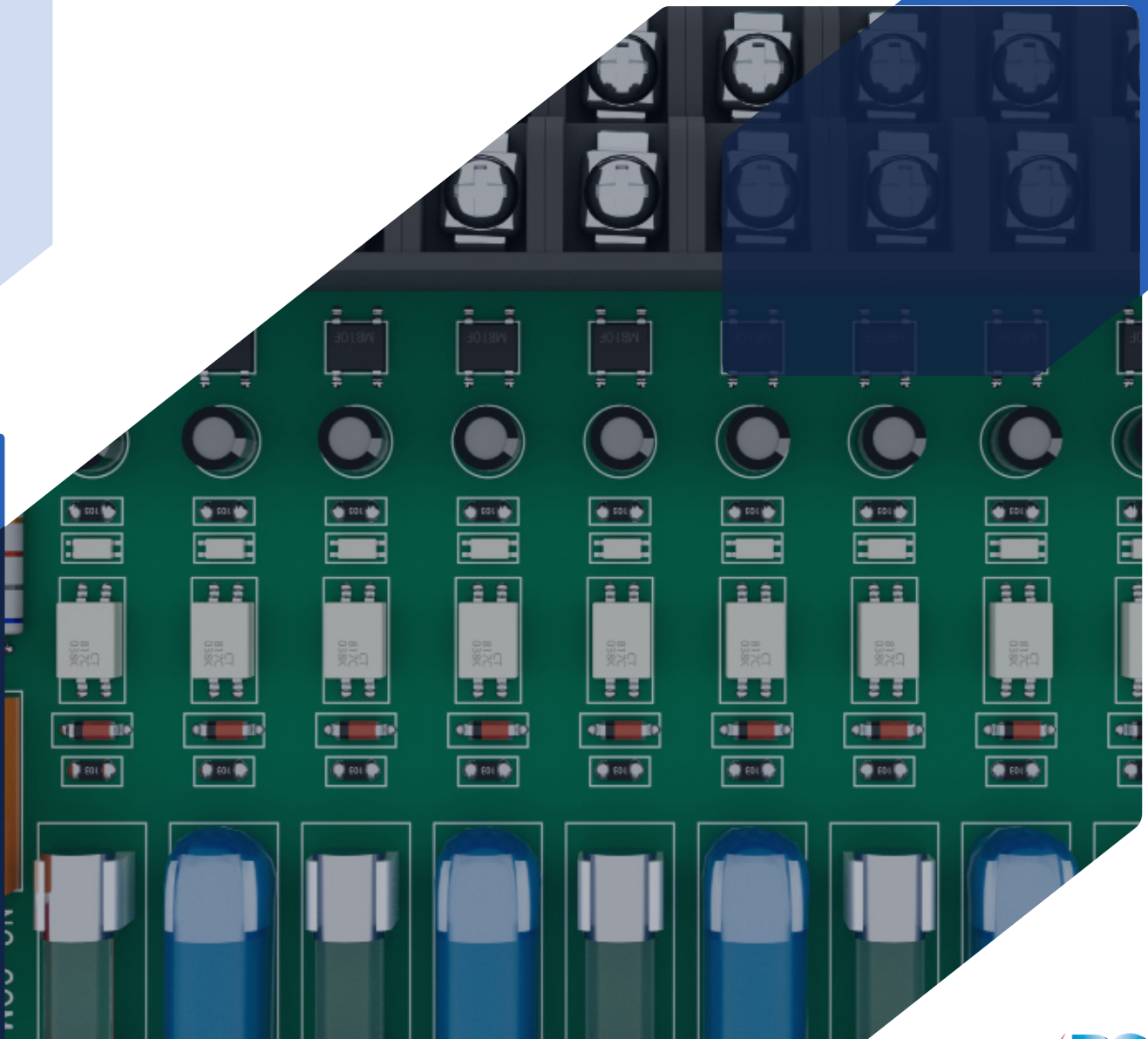


PC Cards

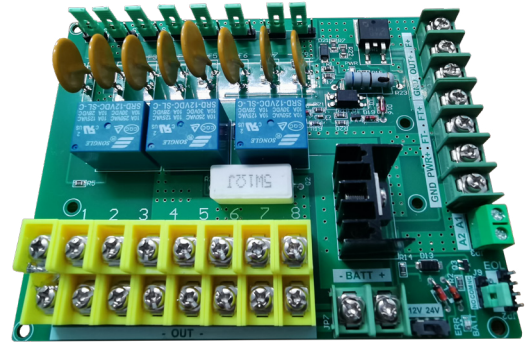
- ✓ PatFuse - Fire trip relay ⚡
- ✓ TIM 01 - Digital timer board ⚡
- ✓ MON 02 - Monitored power distribution board ⚡
- ✓ TRIG 03 - Triggered relay ⚡
- ✓ REL 04 - Relay board ⚡
- ✓ ZP-DC-9/16WAY-PCB – DC Power distribution board with charger ⚡
- ✓ ZP-AC-9/16WAY-PCB - AC Power distribution board ⚡
- ✓ DIS-DC-10WAY2A - 10 Way Power Distribution Board ⚡



Ensure safety and compliance with PATFUSE, the resettable overcurrent protection device that seamlessly opens or closes doors, gates, switches, and more during critical events like fire alarms. Designed for 12V or 24V DC systems.

Features

- ✓ Eight self-healing fused outputs with status LED.
- ✓ Dry contact, 12 or 24VDC fire trip input.
- ✓ Fire alarm monitoring output.
- ✓ Selectable outputs – fire power or standard power.
- ✓ NO/NC selectable dry contact interface outputs.
- ✓ Fits easily into any W-DC 12/24V Patriot power supply.
- ✓ DIN rail mount.
- ✓ Unfused auxiliary output for expansion.
- ✓ Up to 4 hours battery backup (optional).



Specifications

Battery backup: 12 or 24V - selectable

Max. output current: 16A

Max. constant current per output: 2A

Outputs: 8

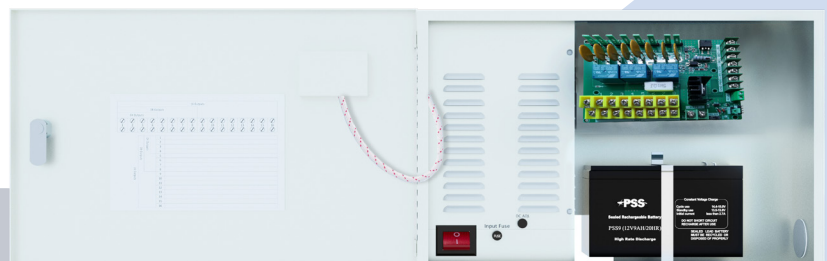
Fuse type: 2A Self-healing PTC

Size: 30 x 133 x 100 mm



Patriot Power Supply: Preloaded with PatFuse Protection & battery backup

Model	Specifications	Dimensions (mm)
WBF-DC12-8A-1	13.5V DC 8A, 16 x 1.85A Outputs, 1 x 9AH/12V Battery & PatFuse	235x362x92
WBF-DC12-12A-1	13.5V DC 12A, 16 x 1.85A Outputs, 1 x 9AH/12V Battery & PatFuse	235x362x92
WBF-DC12-24A-1	13.5V DC, 24A, 32 x 1.85A Outputs, 1 x 9AH/12V Battery & PatFuse	235x362x92
WBF-DC24-4A-1	27V DC, 3.7A, 9 x 1.85A Outputs, 1 x 9AH/12V Battery & PatFuse	332x362x92
WBF-DC24-6.5A-1	27V DC, 6.5A, 16 x 1.85A Outputs, 1 x 9AH/12V Battery & PatFuse	332x362x92



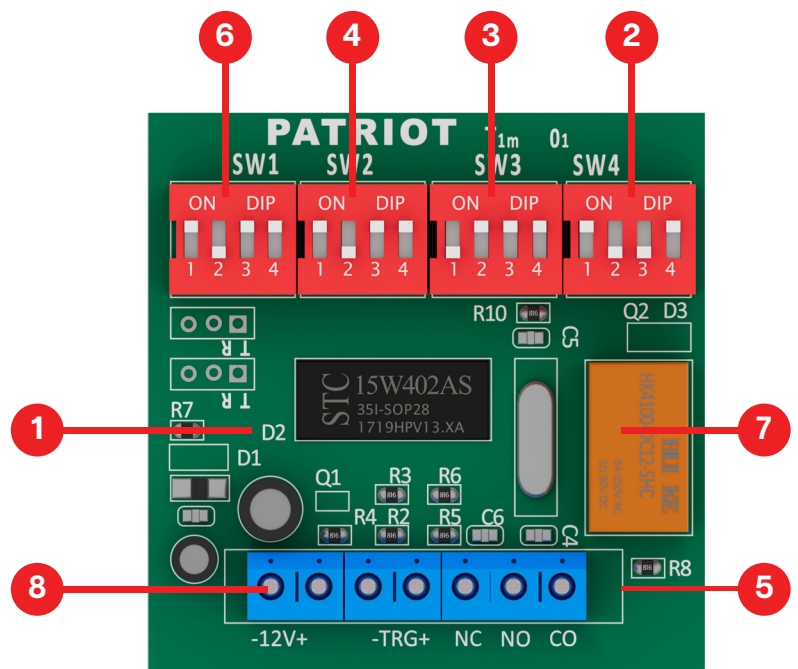
Digital Timer Board

TIM 01

This device is designed to provide 8 field-programmable functions, offering unparalleled control and flexibility. It operates a single-pole, double-throw (SPDT) relay, with adjustable timing intervals ranging from 1 second to an impressive 99 days. Ideal for a wide range of applications, this controller ensures precise timing and reliable operation to meet the most demanding automation requirements.

Layout

1. Power LED
2. SW4 - "Ones" DIP switches
3. SW3 - "Tens" DIP switches
4. SW2 - "Timing" DIP switches
5. Relay operation LED
6. SW1 - "Mode" DIP switches
7. Output relay
8. Terminal block



Specifications

Model: TIM 01

Input voltage: 12VDC - 13.8VDC

Standby current: 15mA @ 12VDC

Operation current: 35mA @ 12VDC

Relay rating: 3A @ 250V AC / 30V DC

Size: 50 x 50 mm



Monitored Power Distribution Board

MON 02

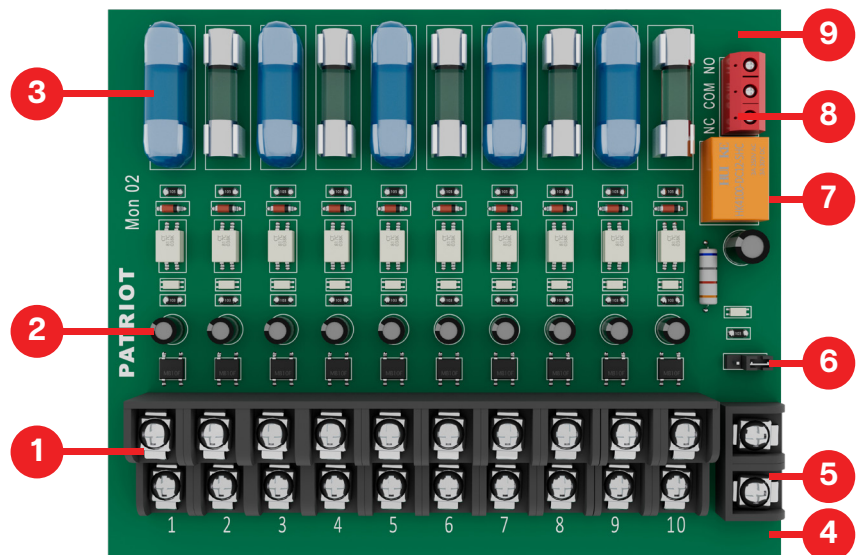
A compact, user-friendly solution for low-voltage power distribution. Featuring 10 individually fused and monitored outputs, advanced SMD technology, and compatibility with 12-24V AC/DC systems.

Features

- ✓ User friendly solution for low voltage power distribution applications.
- ✓ State-of-the-art Surface-Mount Device Technology (SMD) technology.
- ✓ 10 individually fused and monitored outputs.
- ✓ Operating voltage 12-24V AC/DC.

Layout

1. Output terminal blocks
2. Individual circuit LED(Green=OK)
3. Individual circuit fuses (1A each)
4. 24VAC operation LED
5. Input terminal (Max total current =10A)
6. 12VDC/24VAC jumper link
7. Common fault relay
8. Common fault relay output (NC-Com-NO)
9. Common fault LED



Specifications

Model: MON 02
Input voltage: 12-24V AC/DC
Output: 10 x fused and monitored outputs
Total current: 10A Max
Relay rating: 3A@250V AC / 30V DC
Size: 110 x 93mm

Triggered Relay

TRIG 03

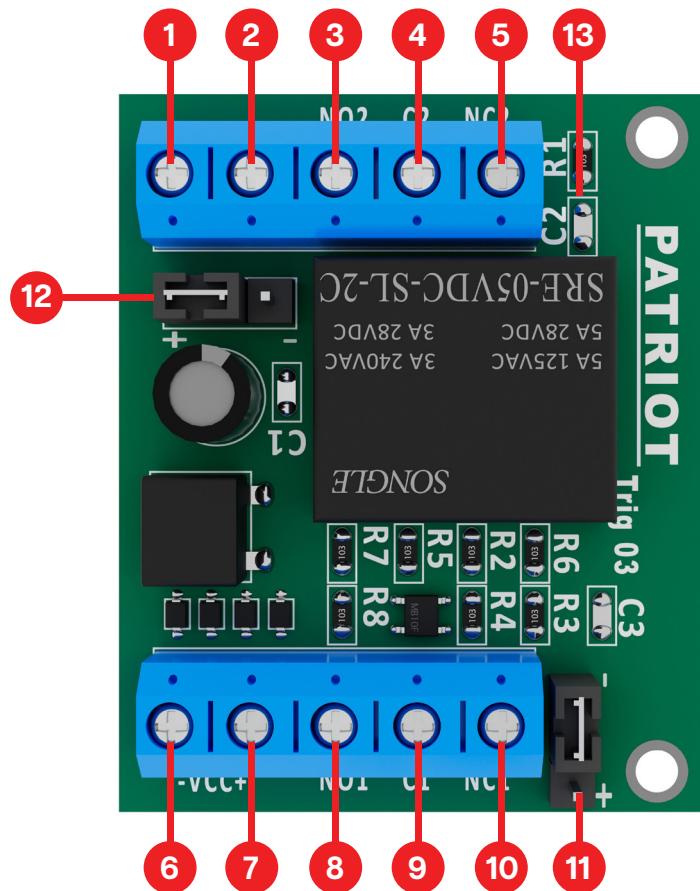
A versatile triggered relay supporting 12-24V DC with options for positive or negative triggering. It features two sets of changeover contacts, an operating LED, and a compact design. Rated at 3A @ 250V AC/28V DC, it's perfect for flexible switching applications.

Features

- ✓ 12-24VDC triggered relay.
- ✓ Option for positive or negative trigger.
- ✓ 2 x sets of change over contacts.

Layout

1. Trigger input (+ Positive)
2. Trigger input (- Negative)
3. Relay 2 - Common
4. Relay 2 - NC
5. Relay 2 - NO
6. 12V input (- Negative)
7. 12V input (+ Positive)
8. Relay 1 - common
9. Relay 1 - NC
10. Relay 1 - NO
11. Positive/Negative trigger link
12. Positive/Negative trigger link
13. Relay operating LED



Specifications

Model: TRIG 03

Input voltage: 8-24V DC or AC

Contact rating: 3A @ 250V AC / 28V DC

Size: 50 x 43 mm

Relay Board

REL 04

A compact and reliable relay board with a wide input range of 8-24V AC/DC. It features a changeover relay with a 3A rating at 250V AC or 30V DC and an operating LED indicator, ideal for versatile switching applications.

Features

- ✓ Wide input range 8-24V AC or DC.
- ✓ Change over relay.

Layout

1. Input terminal
2. Relay output (NC-Com-NO)
3. Relay
4. Relay operating LED

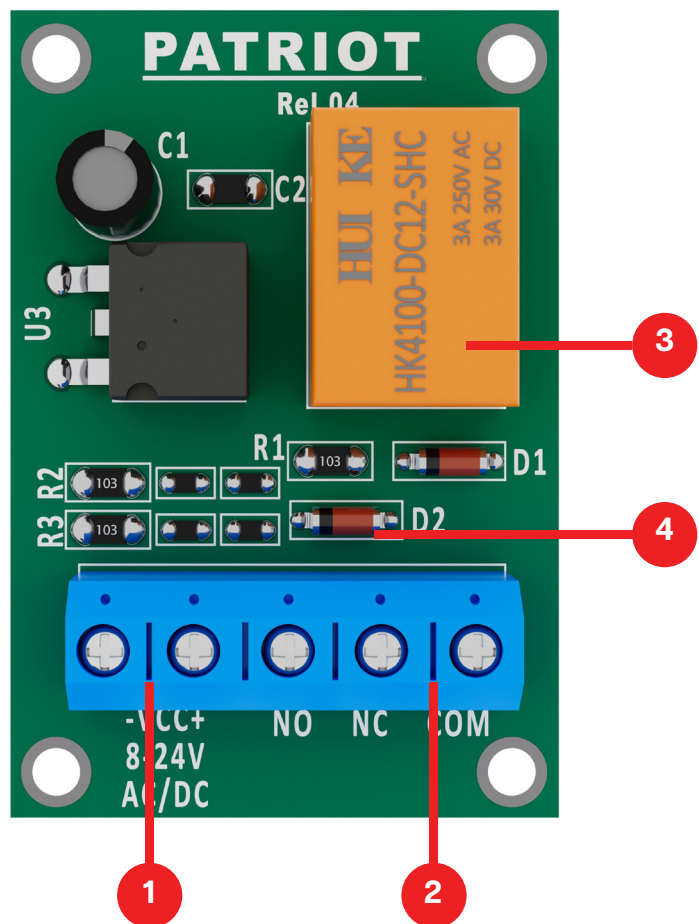
Specifications

Model: REL 04

Input voltage: 8 - 24V AC/DC

Relay rating: 3A @ 250V AC / 30V DC

Size: 49 x 34 mm



DC Power Distribution Board with Battery Charger

ZP-DC-9WAY-PCB | ZP-DC-16WAY-PCB

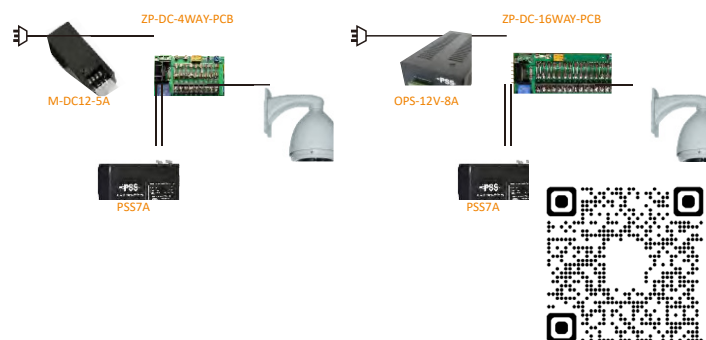
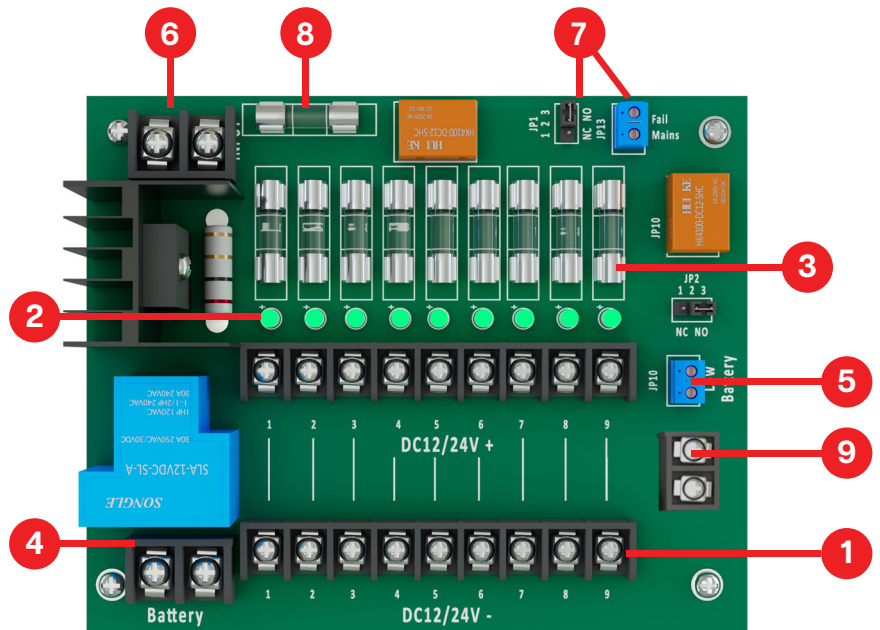
A Robust DC power distribution board featuring reverse polarity protection, multiple fused outputs, low battery and supply fail contacts, and a 1.2A linear battery charger. Available in 9 or 16 output configurations with a maximum current of 9A or 16A respectively.

Features

- ✓ Reverse polarity battery protection
- ✓ Multiple fused outputs
- ✓ Low battery and supply fail contacts
- ✓ 1.2A linear battery charger

Layout

1. Output terminal blocks
2. Individual circuit LED
3. Individual circuit fuses (1A each)
4. Battery charger (1.2A)
5. Low battery terminal (NC/NO)
6. Input terminal (10V-16VDC)
7. Mains fail terminal (NC/NO)
8. Main fuse
9. High current terminal (Max current supplied)



Specifications

Model	ZP-DC-9WAY-PCB	ZP-DC-16WAY-PCB
Input Voltage	10V - 16VDC	
Output	9 x fused outputs	16 x fused outputs
Total current	9A Max.	16A Max.
Relay rating	1A 30VDC	
Battery charger	1.2A	
Size(HxWxD)/weight	31x106x133mm / 180g	31x106x190mm / 220g

AC Power Distribution Board

ZP-AC-9WAY-PCB | ZP-AC-16WAY-PCB

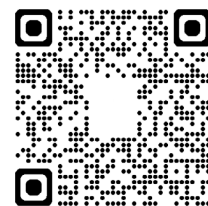
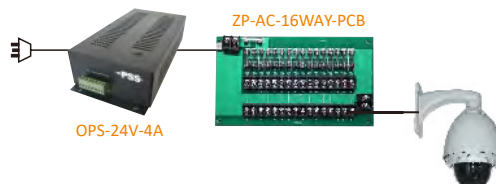
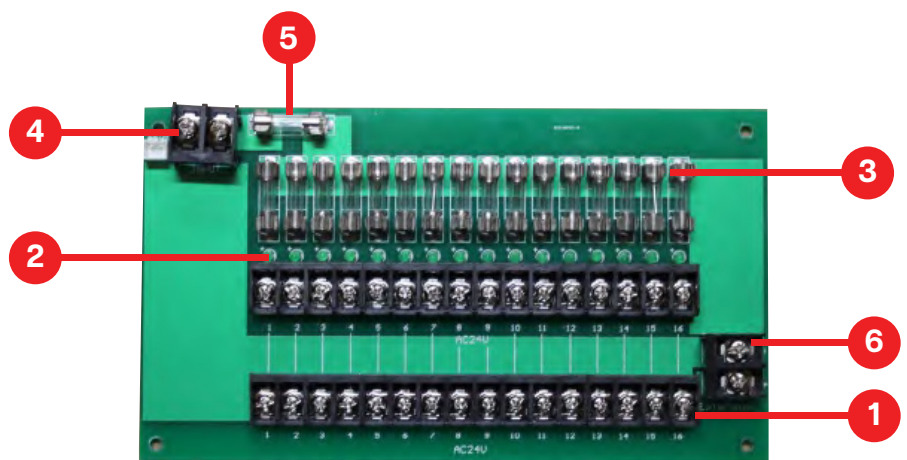
An efficient AC power distribution board featuring multiple fused outputs, a total current fuse, and individual circuit LEDs for easy monitoring. Compatible with 10-30V DC/AC input, they offer 9 or 16 fused outputs with a maximum current of 9A or 16A respectively.

Features

- ✓ Multiple output boards
- ✓ Total current fuse
- ✓ Multiple 1A outputs

Layout

1. Output terminal blocks
2. Individual circuit LED
3. Individual circuit fuses (1A each)
4. Input terminal (10V-30V DC/AC)
5. Main fuse
6. High current terminal (Max current supplied)



Specifications

Model	ZP-AC-9WAY-PCB	ZP-AC-16WAY-PCB
Input Voltage	10V - 30VDC/AC	
Output	9 x fused outputs	16 x fused outputs
Total current	9A Max.	16A Max.
Relay rating	1A 30VDC	
Size(HxWxD)/weight	15x106x133mm / 180g	15x106x190mm / 200g

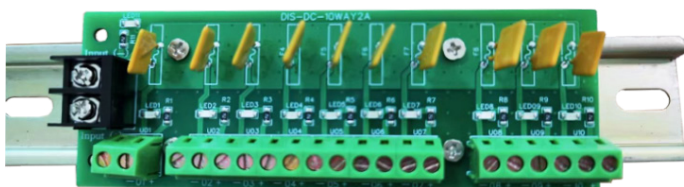
10 Way Power Distribution Board

DIS-DC-10WAY2A

A 20A power distribution board with 10 self-healing fused outputs (2A each), status LEDs, and support for 10-28V DC/AC. Designed for easy installation, it features DIN rail mounting or adhesive tape for quick setups.

Features

- ✓ 20A distribution (10 x 2A outputs).
- ✓ Ten self-healing fused outputs with status LED.
- ✓ 10-28V DC or AC.
- ✓ DIN rail mount.
- ✓ Supplied with double side tape for quick installs.
- ✓ Output LED indicators.



Specifications

Model	DIS-DC-10WAY2A
Input voltage range	0-28V DC/AC
Max. standard power current	20A
Max. constant current per output	2A
Outputs	10
Fuse	2A Self-healing PTC
Mounting	DIN rail or tape
Dimensions (HxWxD)	15 x 127 x 45mm