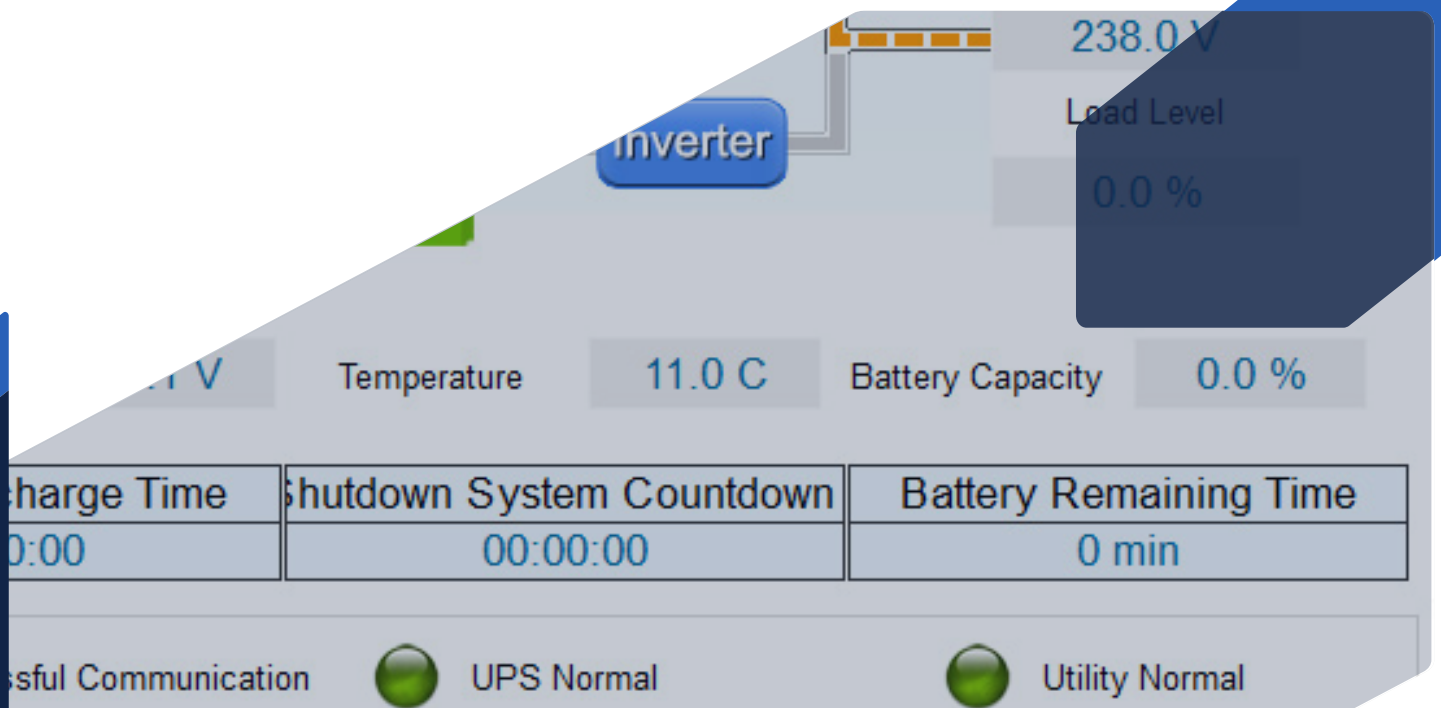


# UPS MONITORING SOFTWARE & COMMUNICATION CARDS

Ensuring your UPS is monitored effectively is critical for maintaining uptime and preventing unexpected failures. PSS offers multiple software and communication options to keep you informed about your UPS status, no matter where you are.

1. Local Monitoring software - included with the UPS 🖱️
2. SNMP Monitoring 🖱️
3. Relay Cards 🖱️

UPS RANGE	LOCAL SOFTWARE - INCLUDED	SNMP SOFTWARE	SNMP	RELAY
Eco	Kpower	NA	NA	NA
XL+	UPSmart	IStars	SW012	SW013
EN 1-3KVA	Upsilon	Netility	SW006	SW011
EN 6/10KVA	UPSmart	IStars	SW026	SW027
GP/Master	Upsilon	Netility	SW004, SW099	Included & standard
EP	MUSER4000	Netility	SW015	SW007
PMU	MUSER4000	Netility	SW005	SW010



## 1. LOCAL MONITORING SOFTWARE - INCLUDED WITH THE UPS

Local monitoring software that connects via USB to a single computer, providing real-time UPS status updates and notifications. Most UPS by PSS Distributors include a software, the software capabilities is dependent on the UPS purchased, however this information is for most, for more specific information, please refer to each UPS.

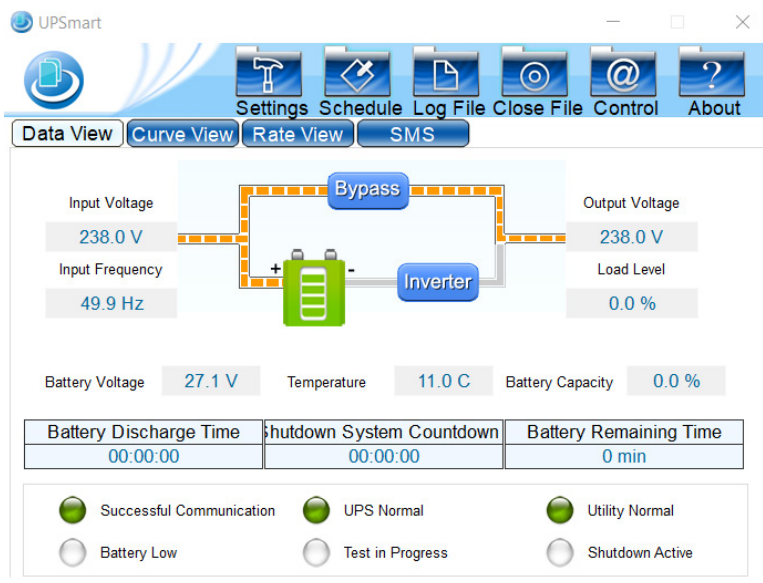
### FEATURES

- ✓ **Easy setup** – Simply connect the UPS via USB, install the software, and you're ready to go.
- ✓ **Email notifications** – Alerts can be configured to send via email, we strongly recommend involving your IT team to ensure proper setup with your email provider.
- ✓ **SMS alerts**– SMS notifications can be set up, this requires configuring a sending number.

### IMPORTANT CONSIDERATIONS:

**If power goes out**, the computer running the local software must remain powered for notifications to be sent.

**Local Monitoring only**, this only allows monitoring on the local computer connected to the UPS.



\*this is an example of one of the software's we offer

## 2. SNMP MONITORING

For advanced monitoring, our SNMP card allows the UPS to connect to a local network, enabling remote monitoring from anywhere via an IP address.

### FEATURES

- ✓ **Remote access** – Monitor your UPS from anywhere in the world.
- ✓ **Network integration** – Ideal for IT-managed environments where multiple UPS systems need oversight.
- ✓ **Email notifications** – Alerts can be sent via email, IT setup is required.
- ✓ **SMS alerts** - Requires additional configuration and access to a sending number.

### IMPORTANT CONSIDERATIONS:

- **If power goes out**, only the **router/internet** needs to stay online for notifications to be sent.
- **Purchased Separately, 1 SNMP Card Per UPS must be set-up via local/on site IT.** System can be complicated to integrate/allow access to local notifications/network depending on site setup. For this we recommend this being configured by on site IT department.



### 3. RELAY CARDS

Relay cards provide **dry contact outputs**, enabling integration with **Building Management Systems (BMS)**, **security alarms**, or **automation systems**. These are ideal for applications where simple on/off signals are required rather than full network-based monitoring.

### FEATURES

- ✓ **Simple, reliable monitoring** – Provides status updates such as **mains failure, low battery, or UPS fault** through dry contact outputs.
- ✓ **No software required** – Works independently of network-based monitoring systems.
- ✓ **Customizable integration** – Can be connected to **BMS, fire alarms, industrial controls, or other external monitoring systems**.
- ✓ **Configurable output contacts** – Normally Open (NO) or Normally Closed (NC) settings, depending on system requirements.

### IMPORTANT CONSIDERATIONS:

- Requires installation into the UPS **via the designated relay port**.
- Output contacts are voltage-free and must be integrated into external systems accordingly.
- **For advanced setups**, consulting your IT or building automation specialist is recommended.
- **Purchased Separately, 1 Relay Card Per UPS**

